

## [Load Annotations](#)

forum.openglobalmind.com

Groups:

[Cognitive Graph Models +3](#)

1

[gyuri](#) 11/13/2020 6:54:40 PM #

The basic building block of the model is a concept

concept statements contexts users

[gyuri](#) 11/13/2020 6:50:56 PM #

augment human cognition.

indeed

[gyuri](#) 11/13/2020 6:50:31 PM #

Describe a general framework that could be used to abstract cognitive processes into a network-graph model. Based on this framework, design a scalable data model that could be used to store, retrieve, and discover new knowledge: in short, which could emulate all the facets of thinking process.



[Collective Intelligence & Wisdom: an OGM-branded virtual fair +1](#)

2

[gyuri](#) 11/13/2020 6:42:04 PM #

speaks about and not from

# Knowledge Ecology Fair 1998 is Now Read-Only

## Thank You To All Participants and Presenters!

Produced by [Community Intelligence Labs](#) and [Metasystems Design Group, Inc.](#)



Dive into the [KEFair Wave!](#)  
Fill out the online [KEFair Evaluation Form](#)  
[Thanks](#) from the producers of KE Fair!



- [Calendar](#)
- [Tracks and Abstracts](#)
- [Sponsors](#)
- [Meet the Exhibitor](#)
- [KEFair Evaluation](#)



Workshops



Cybrary



Open Space Circle



Community Café



KEFair Wave



Keynotes



Knowledge Tools



Special Events



Exhibits

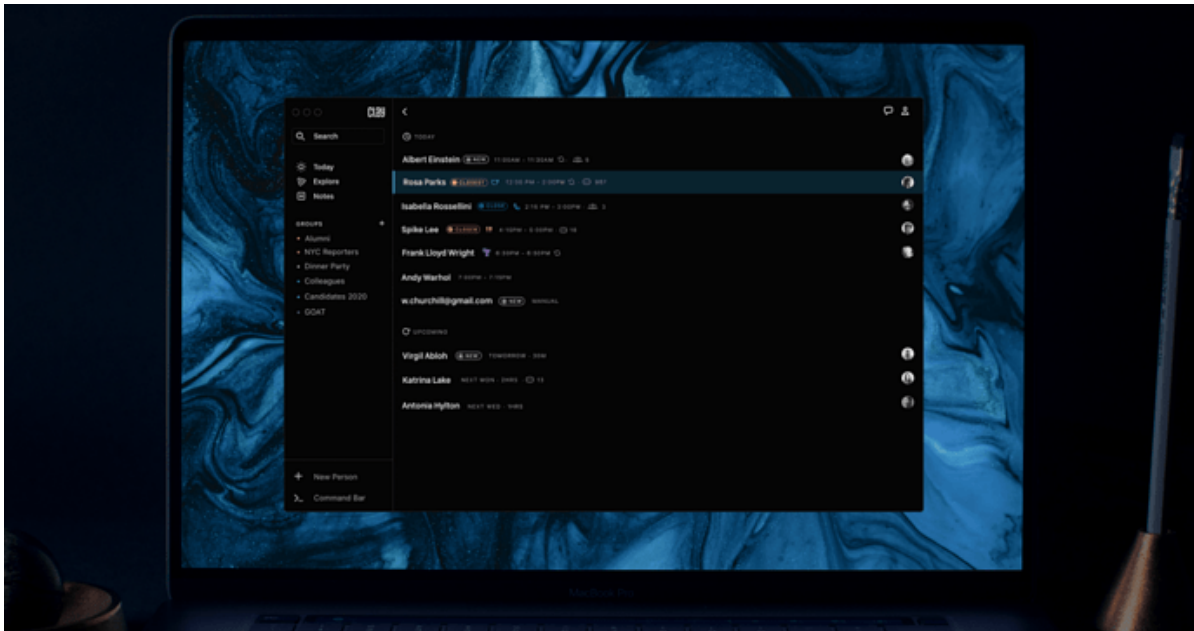
- [Site Guide](#)
- [Site Map](#)
- [Table of Contents](#)
- [Help Desk](#)



✓ [Open Global Mind Forum +31](#)

3

[gyuri](#) 11/13/2020 6:28:27 PM#  
personal CRM



[gyuri](#) 11/9/2020 12:52:05 PM#  
Community Marketplace Patterns

# Discourse

[gyuri](#) 11/9/2020 12:48:45 PM #

How to participate in the OGM Marketplace

# Discourse

[gyuri](#) 10/27/2020 2:39:42 PM #

noteHtml instead, especially because TiddlyWiki handles inline HTML chunks.

**TiddlyMap** Demo Site  
Map drawing and topic visualization for your wiki!

Home + - Settings Refresh

Search

Open Recent Tools More Map Live

⚠ The editor is not displayed in mobile mode.

Powered by TiddlyWiki

## Getting started

@felixhayashi 25th December 2016 at 2:30am

<b>Version</b>	0.17.8+10010
<b>Build date</b>	Sun, 27 Sep 2020 20:47:13 GMT
<b>TW5 compatibility</b>	>=5.1.5

Hi, this is the official demo site of TiddlyMap.

The **motivation** behind TiddlyMap is to combine the strengths of wikis and concept maps in the realms of personal knowledge management in a single application.

See the **version history** for a list of existing features, check out the **docs** to discover what TiddlyMap can do for you or scroll down for some example. Use a double-click on the nodes to **navigate** to the corresponding content. TiddlyMap is designed to be used

the nodes to [navigate](#) to the corresponding content. Tiddlymap is designed to be used on large desktop screens. Here is an impression of how it should look like:

[Screenshot](#).

TiddlyMap is currently in its late beta-phase. If you want to use it in your wiki, check out the [installation instructions](#). Many **thanks** to everybody who made this project possible.

[Star](#) 576

## TaskManagementExample 2.0

30th October 2015 at 10:57am

[Examples](#) [Home](#)

You probably already know that [TiddlyWiki](#) is a great tool to organize yourself and your tasks. A classical example for quick and easy task management is shown here [TaskManagementExample](#). With TiddlyMap, however, you can now specify the relations of your tasks and graphically represent everything as a graph by simply linking your tiddlers!



In this example, the tiddlers from the [TiddlyWiki](#) example are incorporated into the graph view by using the following node filter:

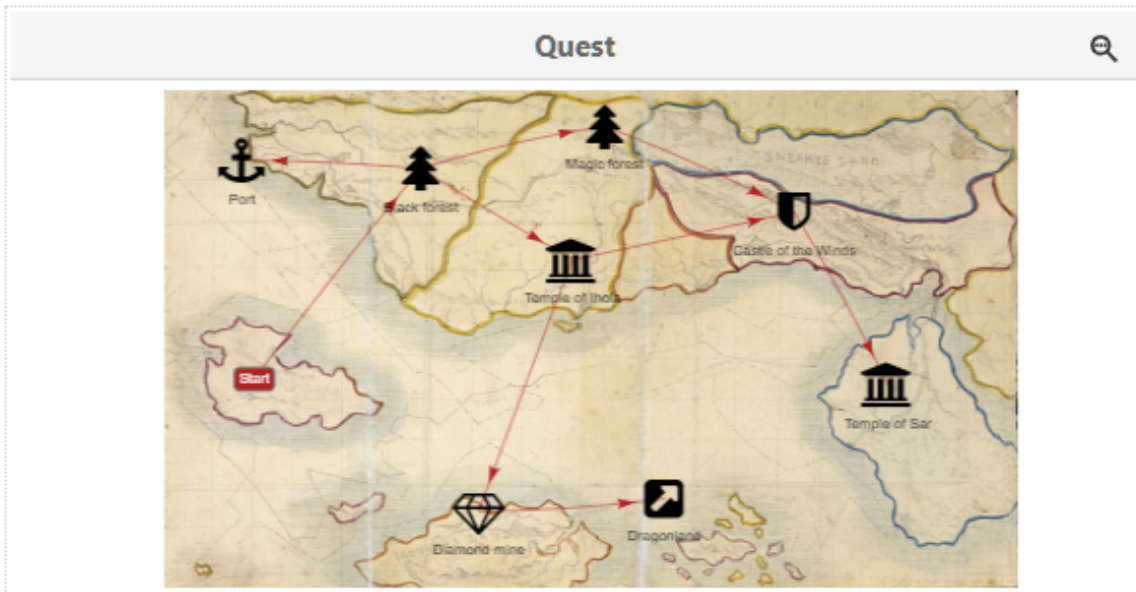
```
[tag[Task]]
```

Despite the color, some task are displayed in a different form. This is because they match a certain node type and inherit its style. Open [TiddlyMap's](#) node-type manager and search for the type "important".

Note that each tiddler's **color field** is used to infer the default node color.

**Think epic. Map your quests!**

Add a background image to your view in your view configuration, add a few nodes, draw a few edges, be a little creative with icons and there you go:



For recurring node types (e.g. the temples in the map above), assign **group styles** by using the node type manager in the **sidebar editor**. The map background can be assigned in the **view configuration**.

By the way, the node named "Dragonland" does not open a tiddler when clicked. Instead, the map is changed to another view. See **Open a view by clicking on a node**.

## Map your literature!

You can use **TiddlyMap** to organize your thesis or to keep track of what you are reading and how your literature interrelates.

In this example, icons are assigned to the nodes with the help of **group styles**. Group styles are simple rules that allow you to assign styles based on filters. Expressed in a simplified scheme e.g. `[tag[Literature]] → Assign PDF Icon`.







❗ Yes, you can use Font Awesome icons as node icons!! See also [Custom node icons](#).

❗ Did you notice that the the icons for books and scientific papers are the same but have a different color? This is because the icon is assigned by the literature **group style** and the group style used for papers partially overrides the literature style by specifying another color. How does **TiddlyMap** know which style should be preferred? You can **Prioritize group styles!**

## Custom node icons



30th October 2015 at 11:31am

[Examples](#)

[Home](#)

[Styling Nodes](#)

In **TiddlyWiki** you can assign icons to your tiddlers by referencing a **locally stored image** in the tiddler's `icon` field. This icon will also appear next to the tiddler's title.

When **TiddlyMap** sees that a Tiddler has an icon field set, it will try to make use of it by displaying it as node icon in a graph. For a complete list of shipped **TiddlyWiki** images see: [TiddlyWiki images as node icons](#).

❗ As of **v0.9.0** it is possible to use **Font Awesome for TiddlyWiki** and paste the icon code (e.g. `&#xf072;` or simply `f072`) into a tiddler field `tmap.fa-icon`. This icon, however, will only be displayed in the graph, not in the tiddler title. Also it is now possible to use **group styles** to assign an image to multiple nodes at once.

### Tiddlers with Icons



The map above is an example that shows some tiddlers that possess an icon. The world icon is a **TiddlyWiki** image assigned to the "World" Tiddler by creating an `icon` field in the tiddler and setting it to `$/core/images/globe`. The plane icon is a Font Awesome icon that is assigned to the "Plane" Tiddler by creating a `tmap.fa-icon` field in the tiddler and setting it to `&#xf072;`.

# Using the Map Raster

25th December 2016 at 2:49am

[Examples](#)

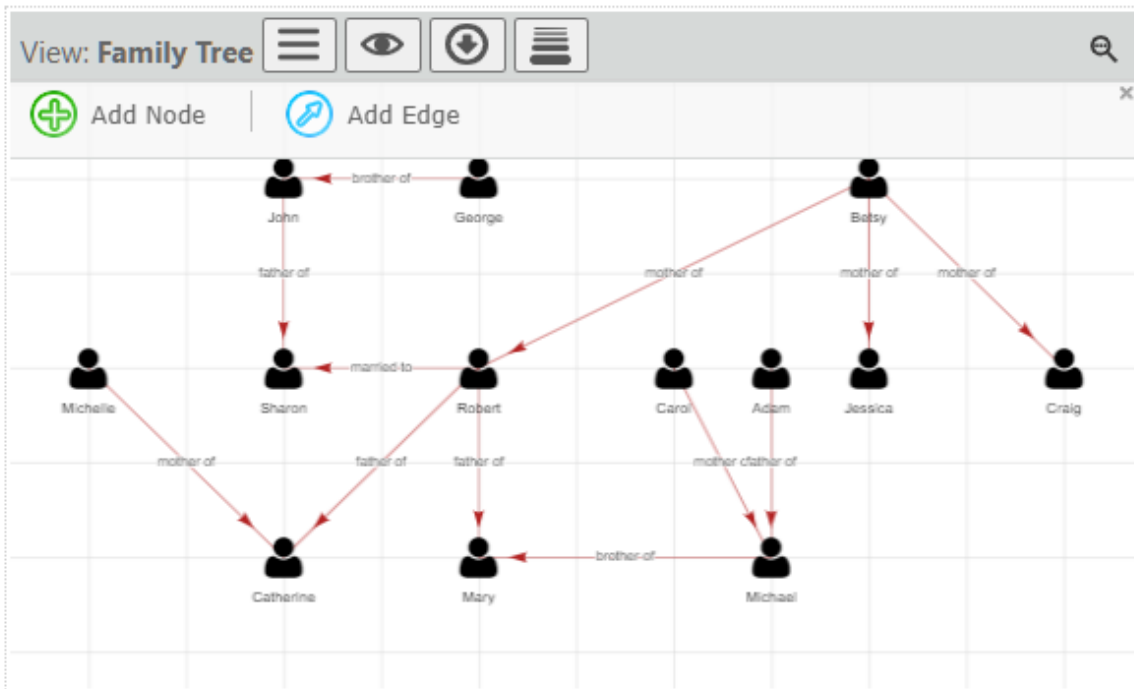
[Home](#)

In TiddlyWiki you can align your nodes on a raster. Just click on the raster button to activate and adjust your raster setting.

Check out this video for a short introduction to this feature:

<https://youtu.be/gT-3rfrwNgE>

Here is an example of a map that has the raster enabled:



[gyuri](#) 10/8/2020 7:03:19 PM #

excessive use of fresh water

excessive fresh water use

[gyuri](#) 10/8/2020 7:01:35 PM #

data points that are in relationship, but need to be woven into a story to be understood

woven into a story understood

[gyuri](#) 9/24/2020 4:54:20 PM #

Following the link gets you better markdown formatting.

Getting Thought names

[gyuri 9/20/2020 8:48:46 PM #](#)

As we articulate our tacit awareness and understanding as we seek to be understood to gain better comprehension, to solve previously unsolvable problems in the digital we are effectively Externalize Our Collective Intellect. I see the possibility there to do it in a way so that we end up with a Map that is the territory that we can explore and in dwell within and after all our explorations we come back to where we started and see it for the first time, for what it is what can we do about it.

The map is the territory of our shared Extellect that we can explore and indwell within

[gyuri 9/20/2020 2:04:27 PM #](#)

definancializing assets through local small business equity funds

definancialising local equity funds

[gyuri 9/17/2020 7:58:16 AM #](#)

unschooled until university

People have urgent need to find out more about unschooling

[gyuri 9/17/2020 7:50:23 AM #](#)

alternative economies; “the matchmaker problem” (as I call it: how might people who have and need things find each other)

matchmaker problem

[gyuri 9/11/2020 2:26:37 PM #](#)

this platform

The time for building platform has passed

[gyuri 9/11/2020 2:25:28 PM #](#)

gets too solutions focused/engineer/reductionist

solution focused engineer reductionist That's what CIOs expect

[gyuri 9/11/2020 2:16:49 PM #](#)

ROAM-ing around this document might work.

ROAM-ing around this document

or TrailMarking it hopefully soon

[gyuri 9/11/2020 2:15:42 PM #](#)

collaborative note-taking

Yes indeed

[gyuri 9/11/2020 2:07:08 PM #](#)

design a firm's strategic plan and don't get to keep it, it costs \$500k. If we do get to keep the framework, it's \$50k.

design keep or not strategic plan

[gyuri 9/11/2020 2:04:54 PM #](#)

create a place where we can foster fruitful collaboration and conversation across disciplines.

space for conversation across disciplines



[gyuri](#) 9/11/2020 2:03:32 PM #

Information Dissemination Platforms able to in real-time, appropriately inform leadership and clearly communicate intentions and expectations needed to drive coordinated and aligned execution

information dissemination platform real time inform leadership

[gyuri](#) 9/11/2020 2:02:58 PM #

nuanced understanding to enable effective decision making

nuanced understanding

[gyuri](#) 9/11/2020 2:02:32 PM #

Robustly Curated Knowledge Objects Library accessible through the landscape maps

robustly curated knowledge objects accessible through landscape maps

[gyuri](#) 9/11/2020 2:01:31 PM #

Strategic Newsroom

strategic newsroom

[gyuri](#) 9/11/2020 2:01:15 PM #

strategic sensing and sense making capabilities. Information gaps, latency, fragmentation, and abstraction limits the ability of Sr. Leadership to gain the holistic real-time understanding needed to effectively respond to rapidly evolving challenges and opportunities.

strategic sensing information gaps latency fragmentation

[gyuri](#) 9/11/2020 1:57:32 PM #

we can give you a point in time download of our brain

point in time download

[gyuri](#) 9/11/2020 1:55:48 PM #

represent permeability of data later.

permeability of data

[gyuri](#) 9/9/2020 3:38:05 PM #

new perspectives change the narrative

new perspective change narrative

[gyuri](#) 9/9/2020 3:37:50 PM #

How do those ideas connect through time?

ideas connect through time

[gyuri](#) 9/9/2020 3:37:22 PM #

expands the knowledge sphere

expand knowledge sphere

[gyuri](#) 9/9/2020 3:36:57 PM #

curate tools to visualize not only ideas, but also the context from which they are drawn

visualize ideas in context

[gyuri](#) 9/9/2020 3:36:26 PM #  
commitment to open-mindedness

open-mindedness

[gyuri](#) 9/9/2020 3:35:52 PM #

mechanism by which we can preserve the qualities and lineage of ideas that have actual truth and merit while also allowing for the recombination of these ideas in ways that create new and novel ones that elevate our collective consciousness?

lineage of ideas recombination elevate collective consciousness

[gyuri](#) 8/13/2020 12:39:06 PM #

it must be on a line all by itself

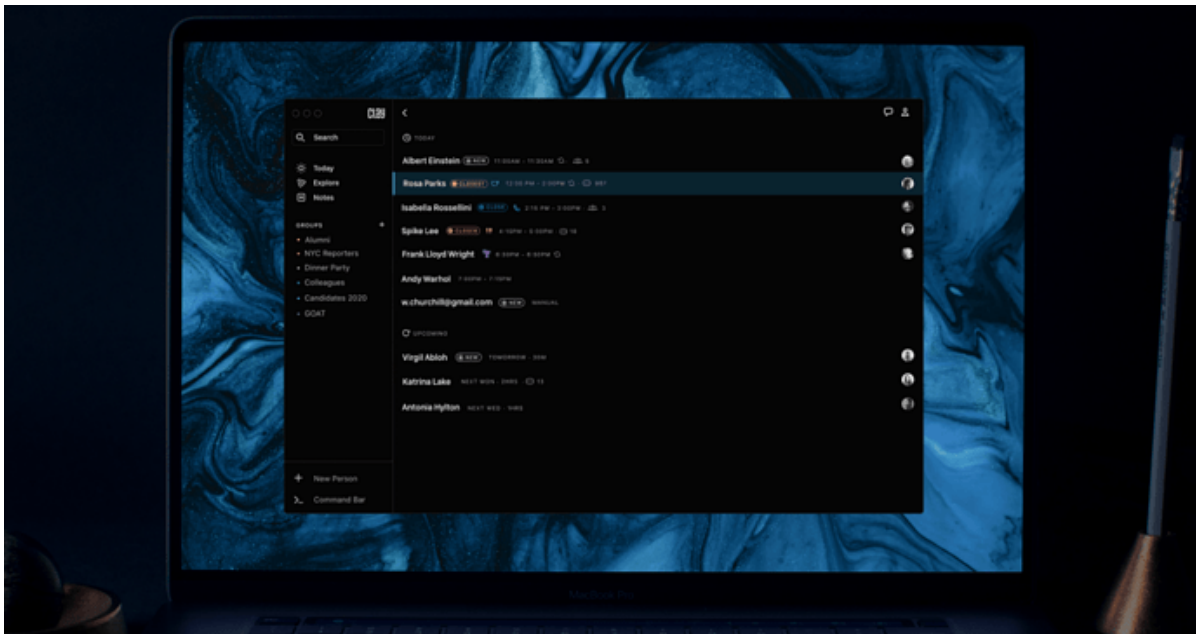
link by itself on a line

[Welcome - Clay +1](#)

4

[gyuri](#) 11/13/2020 6:27:33 PM #

Instant NotesPost-its you throw out, note files you never revisit. Clay is the fastest and most useful note-taking experience that lives right alongside all the people you care about. ExploreNever miss a beat with Explore—a high-level view of all the moments happening in real-time throughout your entire network.



[Invitation to Collaborate on OGM Network Map +1](#)

5

[gyuri](#) 11/9/2020 12:54:55 PM #

Invitation to Collaborate on OGM Network Map

# Discourse


✓ [slides\\_compgcn.pdf +1](#)

6

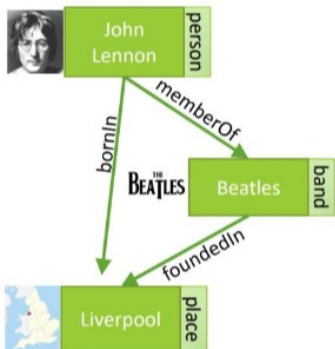
[gyuri](#) 10/10/2020 6:25:03 AM#

from : [@PeterKaminski](#), [forum - OGM](#)

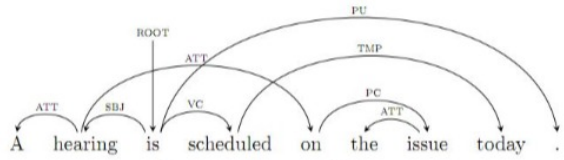
## Multi-relational Graphs



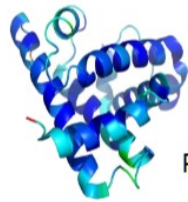
- Graphs with **directed-labeled edges**
- Multi-relational graphs are **pervasive**, examples include...



Knowledge Graphs



Dependency Parse



Proteins

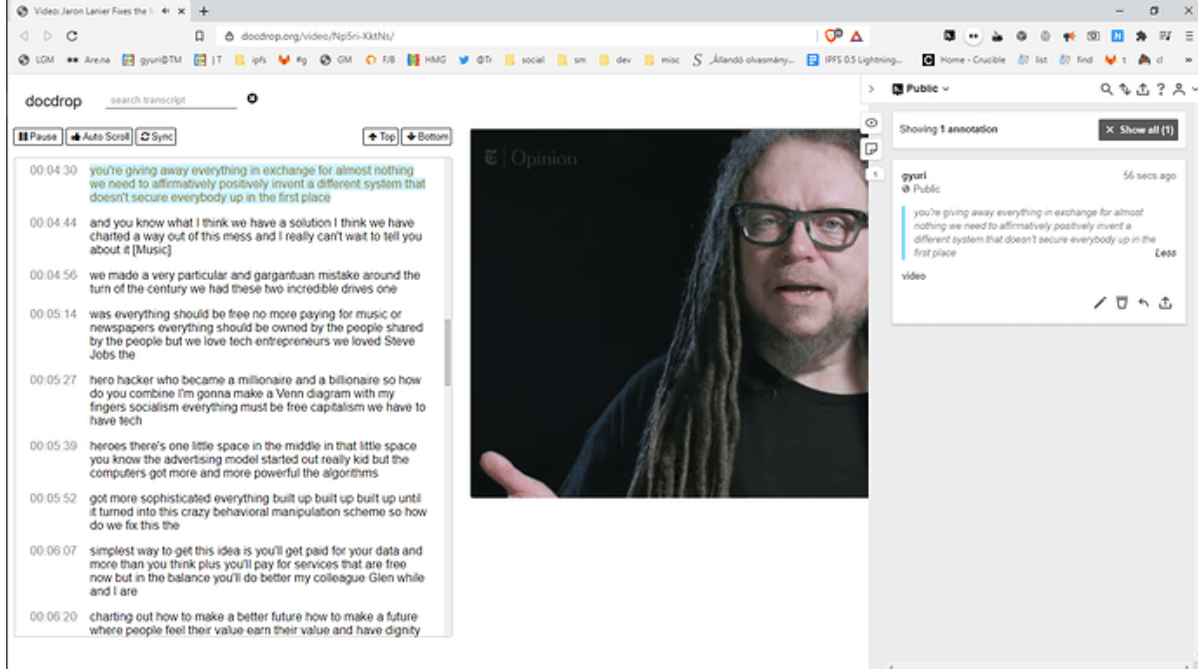
2 / 17

✓ [We Are The System: Please Comment +5](#)

7

[gyuri](#) 10/2/2020 4:50:45 PM#

Tried video annotation, amazing



[gyuri](#) 10/1/2020 7:04:39 PM #  
audio and video.

we need audio video annotation tool in the browser

[gyuri](#) 10/1/2020 7:02:51 PM #

Being able to search through video and audio transcripts would go a long way towards reducing the manual effort.

could not agree more What I am doing is do air notes or whatever Pete Kaminski called in a call. I did not make good notes

described some tool that would take your notes and search the transcript to identify the time slot and give you back a list with the added time information

[gyuri](#) 10/1/2020 6:59:50 PM #

I've gotten pretty good at annotating PDFs by taking screenshots and running them through OCR

Try <https://web.hypothes.is/> for annotating pdfs and the web

[gyuri](#) 10/1/2020 6:58:06 PM #

I'd say the biggest thing missing from most thinking tools is context management.

yes

[Free Jerry's Brain +1](#)

8

[gyuri](#) 9/24/2020 7:54:57 AM #

A brief POC of what a Memex could potentially be. Contribute to [steve-1820/memex](#) development by creating an account on GitHub



✓ [FJB call, debrief Jerry on Braining, 2020-08-04 +2](#)

9

[gyuri 9/24/2020 7:52:22 AM #](#)

This particular wiki I spun up specifically for the purpos of collecting some resources on existing personal knowledge/information management tools (that have applicability for FJB)



A Venue for collecting resources 4 personal information/knowledge management

[gyuri 9/22/2020 10:55:59 AM #](#)

TheBrain stores the data as DiGraphs (there are also additional attributes (easy to view in the 'links' array:

DiGraph with additional attributes

✓ [Draft Vision Document +3](#)

10

[gyuri 9/22/2020 11:24:14 AM #](#)

Networked Thought requires Polycentric Networks of People

Polycentric Networks of People

[gyuri 9/22/2020 11:23:10 AM #](#)

had to join Twitter as we cannot beat it yet.

Networked Thought demands Networked People

[gyuri 9/22/2020 11:09:35 AM #](#)  
Externalize Our Collective Intellect.  
comment

[Big Week for Roam +1](#)

11

[gyuri 9/21/2020 7:13:30 AM #](#)

We've committed 1M from our balance sheet, and 1M from our option pool to a [[Roam Fund]]. For makers building Tools for Thought generally...

Following it with great interest. Responded, will see where it gets to.

[Leading from the Emerging Future +2](#)

12

[gyuri 9/11/2020 6:17:32 PM #](#)

Omni-connectivity.

it

[gyuri 9/11/2020 6:16:49 PM #](#)

people first agenda, automating real-time customization of user's data.

people first agenda

[Open Global Mind Forum +11](#)

13

[gyuri 9/9/2020 3:50:09 PM #](#)

Strategic Newsroom built on immersive and holistic investigative reporting and research

strategic newsroom immersive

[gyuri 9/9/2020 3:49:13 PM #](#)

cut of commercial applications of the platform without being a pirate

cut without piracy

[gyuri 9/9/2020 3:48:38 PM #](#)

Technical applications

it

[gyuri 9/9/2020 3:47:23 PM #](#)

Data from the partnerships and proposals has the potential to make it through the membrane.

data make it through the membrane

[gyuri 9/9/2020 3:46:32 PM #](#)

represent permeability of data later

permeability data layer

[gyuri 9/9/2020 3:45:37 PM #](#)



Makers (Builders)

makers builders

[gyuri 9/9/2020 3:42:34 PM #](#)

OGM may include individuals pitches sponsorship

pitches sponsorship

[gyuri 9/9/2020 3:41:56 PM #](#)

master curators – sensors

master curators sensors

[gyuri 9/9/2020 3:41:21 PM #](#)

prioritizing effectiveness over commercialization

prioritizing effectiveness

[gyuri 9/9/2020 3:40:57 PM #](#)

build it as we go; hacking together existing tools and inventing and integrating new capabilities as we solve new problems.

build as we go hacking together existing tools integrating new capabilities

[gyuri 9/9/2020 3:39:47 PM #](#)

Community Engagement

it

[Is topic-oriented "sensemaking" going to happen on this site? +5](#)

14

[gyuri 8/19/2020 7:25:48 AM #](#)

OGM is a huge sensory overload

sensory overload

Yes, It takes time to tease out the meta narratives, the pearls of wisdom and vistas appearing at increasing frequency.

This discourse channel is a great start it creates records for the conversations that are findable, resumable, shared at source

to increase the available shareable bandwidth

Like this contribution.

I think we should use hypothesis to get conversations over contributions here continuous without being synchronous to start with.

I would want to peddle the idea of using hypothesis, now, for its intrinsic value but also in anticipation of being able to map , channel and pursue these conversations started on the margins here in ways that augments our collective intellect.

[gyuri 8/19/2020 6:08:57 AM #](#)

meta narratives and endless netherworlds of cyberspace?

netherworld of cyberspace

[gyuri](#) 8/19/2020 6:07:39 AM <#>

non-sense making and actual disappointment and despair in not being able to contribute

non-sense making

indeed

When people feel the pain there is hope for finding a way

[gyuri](#) 8/19/2020 6:05:22 AM <#>

which are ok for daydreaming

stop dreaming

A task without a vision is drudgery. A Vision without a task is dreaming. A Task with a Vision is hope for the World

[gyuri](#) 8/19/2020 6:04:15 AM <#>

too many disembodied meta clouds floating around

meta clouds